



Underwear and swimwear

The expert for soft seams you can hardly feel



www.guetermann.com

Gütermann

Seams you can hardly feel

The expert for seams on underwear and swimwear

NOTHING IS FINER, NOTHING SOFTER, THAN THE GARMENTS WE WEAR RIGHT NEXT TO OUR SKIN. WHAT WE WANT FROM THEM IS A PLEASANT FEEL WITHOUT ANY AREAS OF PRESSURE. THE ESSENTIAL PREREQUISITE FOR THIS COMFORT IS SOFT SEAMS THAT ARE ELASTIC AND STRETCHY ENOUGH TO MOVE WITH YOUR BODY. THE SEAM IS THE ONE YOU CAN'T FEEL AT ALL. THIS IS EXACTLY WHAT DISTINGUISHES THREADS BY GÜTERMANN.

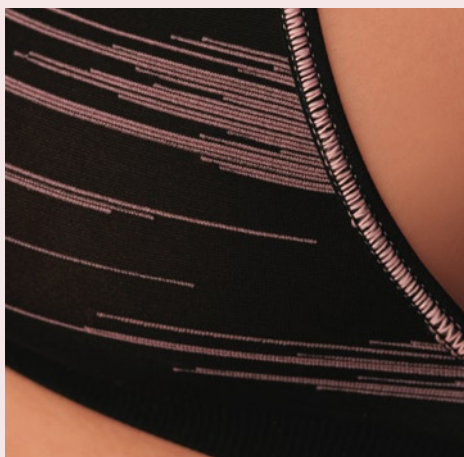


Underwear

Are you looking for the perfect thread for especially soft, elastic seams? Gütermann offers a wide range of threads that meet these demands to the full. The best of all are extra-fine microfibre and polyamide threads that are ideal for overlocking, coverseam, lockstitch and double chain stitch seams. Particularly when it comes to sewing on labels and elastic. And also when the garments have to be sewn with extremely fine needles.

The Gütermann solutions:

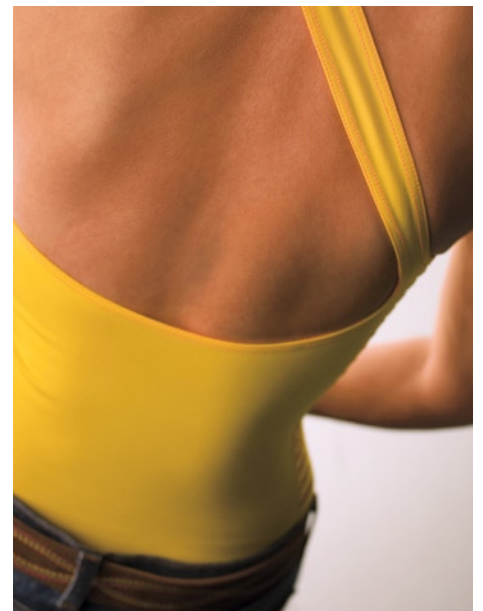
- Piuma 140, extra-fine textured microfibre thread for overlock, coverseam and safety stitch seams
- Princess in sizes 160, 120 and 80 – special sewing thread for “garment-dyeing” for underwear, ladies’ stockings and tights made of polyamide
- Gütermann A 192 – No. 150 and Gütermann A 282 M – No. 120 for lockstitch, double chain stitch and coverseams on fine-knit fabrics
- Tera 180, particularly fine, smooth thread for sewing on elastic
- Gütermann E 151 – No. 160 and Gütermann E 382 – No. 80 as an economical alternative



The Gütermann solutions at a glance

Simply softer, more elastic and ideal for “garment-dyeing” – these are the added benefits of Gütermann threads. And, of course, their excellent sewability.

| Product | Work | Gütermann solution |
|-------------------------------------|---|--------------------------------------|
| Underwear | Overlock, coverseam and safety stitch seams “garment-dyeing” | Piuma 160 – No./Tkt. 160 (tex 19) |
| | | Piuma 140 – No./Tkt. 140 (tex 22) |
| | | Princess 160 – No./Tkt. 160 (tex 18) |
| | | Princess 120 – No./Tkt. 120 (tex 25) |
| | | Princess 80 – No./Tkt. 80 (tex 38) |
| | Lockstitch, double chain stitch and coverseam | A 192 – No./Tkt. 150 (tex 20) |
| | | A 282 M – No./Tkt. 120 (tex 25) |
| Elastic tape/ labels alternative | Tera 180 – No./Tkt. 180 (tex 16) | |
| | E 151 – No./Tkt. 160 (tex 19) | |
| | E 382 – No./Tkt. 80 (tex 38) | |
| Corsetry | durable and decorative seams | A 302 – No./Tkt. 100 (tex 30) |
| | | A 382 – No./Tkt. 80 (tex 40) |
| Swimwear | general | A 282 M – No./Tkt. 120 (tex 25) |
| | | A 192 – No./Tkt. 150 (tex 20) |
| | “garment-dyeing” | Princess 160 – No./Tkt. 160 (tex 18) |
| | | Princess 120 – No./Tkt. 120 (tex 25) |
| | | Princess 80 – No./Tkt. 80 (tex 38) |
| | Overlock and coverseam | Piuma 140 – No./Tkt. 140 (tex 22) |
| | | E 151 – No./Tkt. 160 (tex 19) |
| A 382 – No./Tkt. 80 (tex 40) | | |
| Elastic and lycra tape | Tera 180 – No./Tkt. 180 (tex 16) | |



Corsetry

Are you looking for a stronger thread? After all, not everything that is worn against the skin is meant to be loose, light, stretchy and elastic! We also have exactly the right thread for sewing heavier materials, corsetry and basques. Core spun threads for areas where the necessary stretch is not only achieved with the type of stitch, but also with a higher stitch density.

The Gütermann solutions:

- Gütermann A 302 – No. 100 and Gütermann A 382 – No. 80, special sewing threads for durable seams, decorative seams and bar tacking

Swimwear

It's the stretch in a seam that interests you most. Polyester sewing threads by Gütermann have proven extremely successful for use in swimwear made of high-stretch knitted fabrics and beachwear made of non-stretch wovens. They are characterised by high chlorine resistance and dry considerably faster than, for example, core spun threads made of polyester/cotton.

The Gütermann solutions:

- Either Gütermann A 282 M – No. 120 and Gütermann A 192 – No. 150 according to sewing and required decorative effect
- Piuma 160 and Piuma 140 as a particularly soft textured microfibre thread
- Princess in sizes 160, 120 and 80 – special sewing thread for “garment-dyeing”
- Gütermann E 151 – No. 160 and Gütermann E 382 – No. 80 for soft overlock and coverseam with good coverage
- Tera 180 for sewing on elastic and lycra tape at leg-holes

Small pictures, top: perfectly suited for all kinds of water – threads for swimwear.

Small picture, bottom: Piuma – soft on the skin.

| | | | | | | |
|---|--|-------------------------------|--|------------------------|--|---|
| Headquarters: Gütermann AG | | DE-79261 Gutach-Breisgau | | Tel.: +49 7681 21-0 | | Fax: +49 7681 21-449 |
| Perivale Gütermann Ltd. | | GB-Hayes, Middlesex UB4 0JR | | Tel.: +44 20 858916-00 | | Fax: +44 20 858916-36 |
| Gütermann Polygal Mexicana S.A. de C.V. | | MX-Jiutepec, Morelos CP 62500 | | Tel.: +52 777 32937-00 | | Fax: +52 777 32937-22 |
| Gütermann of America Inc. | | US-Charlotte, N.C. 28217 | | Tel.: +1 704 52570-68 | | Fax: +1 704 52570-71 www.guetermann.com |